

## DIAGNOSIS DETECTION OF ACUTE RESPIRATOR INFECTION WITH FORWARD CHAINING METHOD

Tri Wisnu Pamungkas<sup>1</sup>; Resi Taufan<sup>2</sup>; Petrus Damianus<sup>3</sup>; Gabriel Vangeran Saragih<sup>4</sup>; Tri Retnasari<sup>5</sup>

<sup>1,2,3,4</sup>Program Studi Ilmu Komputer

<sup>5</sup>Program Studi Teknik Informatika  
Universitas Nusa Mandiri

<https://www.nusamandiri.ac.id/>

14002332@nusamandiri.ac.id<sup>1</sup>, resिताuf1508@nusamandiri.ac.id<sup>2</sup>, 14002337@nusamandiri.ac.id<sup>3</sup>,  
14002327@nusamandiri.ac.id<sup>4</sup>, tri.tris@nusamandiri.ac.id<sup>5</sup>

(\*) Corresponding Author

**Abstract**—Many acute respiratory infections or ARI are caused by viruses that attack the nose, trachea (breathing tube), or the lungs. It can be said that ARI is caused by inflammation that disrupts a person's breathing process. If not treated quickly, ARI can spread to all respiratory systems and prevent the body from getting proper oxygen, moreover it can cause the loss of a person's life. This research aims to diagnose ARI as an early step in practicing artificial intelligence in medicine, designing and apply an expert system that can diagnose ARI. The procedure used in this study uses forward chaining with tracking that begins with input data, and then creates a diagnosis or solution. The expert system used to diagnose acute respiratory inflammation uses the Forward chaining procedure with a data-driven approach, in this approach tracking starts from input data, and then seeks to draw conclusions, so that it can be used, diagnose the type of disease associated with the ARI disease experienced by showing the existing signs.

**Keywords:** forward chaining, ispa, expert system

**Abstrak**—Infeksi saluran pernapasan akut ataupun ISPA banyak diakibatkan oleh virus yang menyerang hidung, trakea (pipa pernapasan), ataupun paru-paru. Dan dapat dikatakan ISPA disebabkan peradangan yang mengacaukan proses pernafasan seseorang. Apabila tidak lekas ditangani, ISPA dapat menyebar ke segala sistem pernapasan serta membuat badan tidak mendapatkan oksigen yang layak, apalagi yang lebih parah dapat menimbulkan hilangnya nyawa seseorang. Riset ini bertujuan untuk mendiagnosa penyakit ISPA selaku langkah dini mempraktikkan kecerdasan buatan dalam dunia kedokteran, merancang serta mengaplikasikan sistem ahli yang dapat mendiagnosa penyakit ISPA. Tata cara yang digunakan dalam penelitian ini menggunakan forward chaining dengan pelacakan yang diawali dari data masukan, serta berikutnya menciptakan

diagnosa ataupun pemecahan. Sistem pakar yang digunakan untuk mendiagnosa peradangan saluran pernafasan akut memakai tata cara Forward chaining (pelacakan ke depan) dengan pendekatan yang di jalani dengan informasi (data-driven), dalam pendekatan ini pelacakan diawali dari data masukan, serta berikutnya berupaya menggambarkan kesimpulan, sehingga bisa mendiagnosa tipe penyakit yang berhubungan dengan penyakit ISPA yang dialami dengan memperlihatkan tanda-tanda yang ada.

**Kata Kunci:** forward chaining, ispa, sistem pakar

### INTRODUCTION

ARI is a disease that is easily spread. People who are easily affected by this disease are those who have immune system disorders, elderly people, and children are also susceptible to this disease, because their immune systems are not fully developed. Acute respiratory infections according to (Mardiah et al., 2017) is a major health problem. Some ARI diseases include influenza, sinusitis, laryngitis, pharyngitis, tonsillitis, epiglottitis and pneumonia. (Wulandari & Basuki, 2019).

The problem that often arises according to (Nuraeni et al., 2016) is the availability of expert doctors or experts who have knowledge in certain fields which is quite limited while many patients need to be diagnosed with their illness and treated immediately. A system is needed according to (Ramadhana et al., 2020) that can provide convenience for the public to know and be aware of the early detection of ARI disease. So that people can know the first action that must be taken before going to the doctor for further treatment.

There are several studies that have been carried out in diagnosing diseases, including a web-based pregnancy diagnosis expert system (Abdillah et al., 2018), an expert system for diagnosing breast



cancer and how to treat it (Puspitawati, 2018), expert applications for diagnosing skin diseases using this method, forward chaining (Nuraeni et al., 2016), the design of an expert system for diagnosing renal tubular acidosis using the certainty factor method (Fanny et al., 2017), an expert system for diagnosing allergic diseases in children based on the forward chaining method in the city of Batam (Jarti & Trisno, 2017), an expert system for diagnosing diseases caused by smoking using the forward chaining method (Hidayat & Gumilang, 2017), an expert system for diagnosing osteoporosis in the elderly using the forward chaining method (Permata Sari & Realize, 2019).

Of these methods, the most frequently used is the forward chaining method, forward chaining is a strategy to predict or find a solution to a problem that starts with a set of known facts (Permata Sari & Realize, 2019). In the Forward Chaining method, tracking starts from tracing all data and rules to achieve the goal (Nuraeni et al., 2016), with the Forward Chaining method departing from left to right, namely from the premise to the final conclusion, this method is often called data driven, namely The search is controlled by the data provided (Kusuma et al., 2018), so that the forward chaining method will be used to match the symptoms in the form of questions which will be answered by the user with existing rules, then conclusions will be obtained (Afandi & Sulisty, 2019).

With the existence of a system that is useful for diagnosing disease, an expert system is a good solution to identify and provide data about diseases designed by the system so that humans can immediately recognize data about prevention and methods of curing the disease. The expert system used to diagnose throat diseases with the forward chaining method can be used to determine various diseases of the respiratory tract.

The purpose of this study is to facilitate the public in obtaining the necessary data about throat and respiratory diseases clearly and completely, especially those related to the symptoms of ARI.

## MATERIALS AND METHODS

Expert System is a system or program that acts like an expert (Masya et al., 2016), and according to (Minarni et al., 2017) an expert system is a computer-based application that is used to solve problems as thought by experts. The experts in question are people who have special skills who can solve problems that cannot be solved by ordinary people (Hidayat & Gumilang, 2017). Most rule-based expert systems use an inference strategy called the pomen mode. Based on this strategy, if there is an "IF A THEN B" rule, and if it is known that

A is true, then it can be concluded that B is also true. There are two approaches to control inference in a rule-based expert system, namely backward chaining and forward chaining (Wahyudi et al., 2016). The forward chaining method is said to be an inference method that makes reasoning from a problem to its solution (Permata Sari & Realize, 2019). While the inference engine is a computer program that provides a methodology for reasoning about the information contained in the rule or knowledge base, this component has a mindset and reasoning used by experts in solving a problem (Maliki & Dangkoa, 2018). In this study, using the forward chaining method modeling for the manufacture of an expert system for diagnosing acute respiratory infections. The forward chaining method is a decision-making method commonly used in expert systems (Kusuma et al., 2018).

The types of systems that can use forward chaining tracking techniques are: (Kusuma et al., 2018).

- A system represented by one or more conditions.
- For each condition, the system searches the knowledge base for rules that correspond to the conditions in the if section.
- Each rule can generate a new condition from the conclusion requested in the then section, this new condition can be added to other conditions that already exist.
- Every condition added to the system will be processed, if a condition is found, the system will return to step 2 and look for the rules in the knowledge base again, if there is no new conclusion, the session ends.

Before implementing an expert system, first design the algorithm of the expert system. Algorithms are used to help make it easier to read the program created. In Figure 1 describes the process to get the results of a diagnosis of a disease, starting from the diagnosis form then answering questions in the form of answer choices that are in accordance with the symptoms after that display the results of the diagnosis.

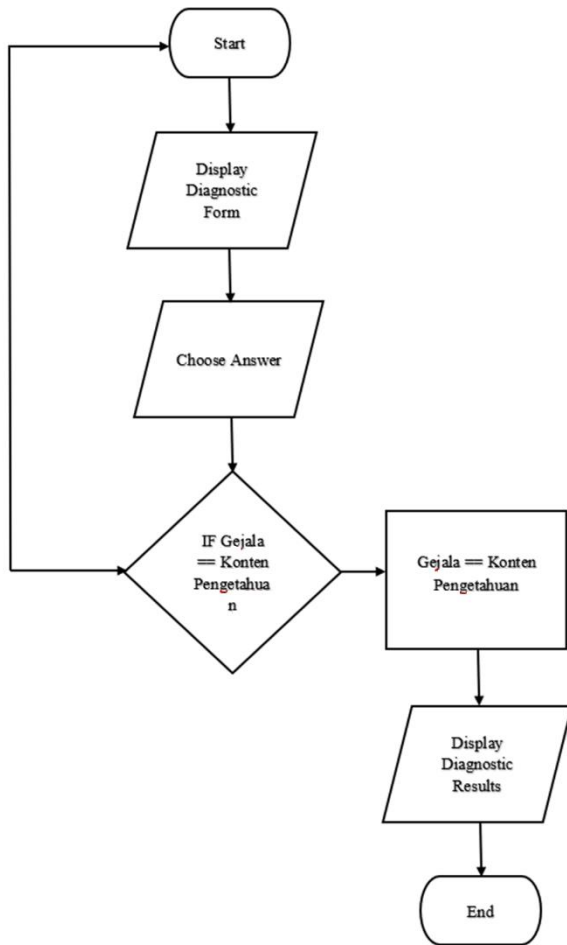


Figure 1. Algorithm Design

**RESULTS AND DISCUSSION**

An expert system in the form of representation of knowledge from experts, where the content of this knowledge is composed of facts and rules. This knowledge content is composed of expert tables, expert rules and expert decision trees. The following is a detailed explanation of the knowledge content created:

**1. Expert Table.**

This design consists of symptom data and disease data which is a very important object to assist in processing an expert system for diagnosing acute respiratory infections. The following table of experts is designed to simplify the process of processing data entered into knowledge content. In table 1 there is a disease code and disease data that is the sample in this study which serves as initial data. The disease code is an alias of the disease data which is used as a comparison in the 'IF' condition.

Table 1. Data Penyakit

No	Kode Penyakit	Nama Penyakit
1	P01	Rhinosinusitis / Sinusistis
2	P02	Tonsilitis, Faringitis, Laringitis (Radang Tenggorokan)
3	P03	Epiglottis
4	P04	Bronkitis
5	P05	Bronkiolitis
6	P06	Pneumonia
7	P07	Pleuritis
8	P08	Commond Cold
9	P09	ILI (Influenza Like Illness)

While in table 2 contains data gejala which contains kode gejala and the name of the symptom by adjusting the types of diseases that can be used in diagnosing ARI disease experienced by the user. The symptom code is an alias of the symptom name which is used as a comparison in the 'IF' condition.

Table 2. Data Gejala

No	Kode Gejala	Nama Gejala
1	G01	Demam
2	G02	Batuk-Batuk
3	G03	Hidung Tersumbat / Pilek
4	G04	Sakit Kepala / Pusing
5	G05	Sakit Tenggorokan / Susah Menelan
6	G06	Lesu / Lemas
7	G07	Sesak Napas
8	G08	Frekuensi Napas Cepat
9	G09	Suara Napas Kasar
10	G10	Nafsu Makan Berkurang / Susah Makan
11	G11	Berkurang Nya Indra Pengecap Dan Bau
12	G12	Suara Serak
13	G13	Gelisah / Susah Tidur
14	G14	Nyeri Didada
15	G15	Sering Muntah
16	G16	Nyeri Sekitar Wajah
17	G17	Nafas Berbau
18	G18	Sakit Pada Persendian Dan Otot
19	G19	Sakit Otot Dan Sendi
20	G20	Perubahan Warna Ingus

**2. Expert Rules.**

To reflect knowledge, a method in the form of IF-THEN is used. The rules used in this expert system are as follows:

**Rule 1**

**IF** Demam

- AND batuk-batuk
- AND hidung tersumbat/pilek
- AND sakit kepala/pusing
- AND sakit tenggorokan/susah telan
- AND lesu/lemas
- AND nyeri sekitar wajah
- AND nafas berbau
- AND perubahan warna ingus

**THEN** terdiagnosa penyakit rhinosinusitis



**Rule 2****IF** Demam

AND batuk-batuk  
 AND hidung tersumbat/pilek  
 AND sakit kepala/pusing  
 AND sakit tenggorokan/susah telan  
 AND lesu/lemas  
 AND nafsu makan berkurang  
 AND nyeri sekitar wajah  
 AND nafas berbau  
 AND perubahan warna ingus

**THEN** terdiagnosa penyakit tonsilitis**Rule 3****IF** Demam

AND batuk-batuk  
 AND hidung tersumbat/pilek  
 AND sakit kepala/pusing  
 AND sakit tenggorokan/susah telan  
 AND nafsu makan berkurang  
 AND nyeri sekitar wajah  
 AND nafas berbau  
 AND perubahan warna ingus

**THEN** terdiagnosa penyakit epiglottitis**Rule 4****IF** Demam

AND hidung tersumbat/pilek  
 AND sakit kepala/pusing  
 AND sakit tenggorokan/susah telan  
 AND sesak nafas/  
 AND frekuensi nafas cepat  
 AND nyeri sekitar wajah  
 AND nafas berbau  
 AND perubahan warna ingus

**THEN** terdiagnosa penyakit bronchitis**Rule 5****IF** Demam

AND hidung tersumbat/pilek  
 AND sakit kepala/pusing  
 AND lesu/lemas  
 AND sesak nafas  
 AND frekuensi nafas cepat  
 AND suara nafas kasar  
 AND berkurangnya indra pengecap  
 AND sering muntah

**THEN** terdiagnosa penyakit bronkiolitis**Rule 6****IF** Demam

AND batuk-batuk  
 AND sakit kepala/pusing  
 AND lesu/lemas  
 AND sesak nafas  
 AND frekuensi nafas cepat  
 AND suara nafas kasar  
 AND suara serak

**THEN** terdiagnosa penyakit pneumonia**Rule 7****IF** Demam

AND batuk-batuk  
 AND sesak nafas  
 AND frekuensi nafas cepat  
 AND nafsu makan berkurang  
 AND nyeri dada

**THEN** terdiagnosa penyakit pleuritis**Rule 8****IF** Demam

AND batuk-batuk  
 AND hidung tersumbat/pilek  
 AND sakit kepala/pusing  
 AND lesu/lemas  
 AND nafsu makan berkurang  
 AND berkurangnya indra pengecap

**THEN** terdiagnosa penyakit common cold**Rule 9****IF** Demam

AND batuk-batuk  
 AND sakit kepala/pusing  
 AND lesu/lemas  
 AND nafsu makan berkurang  
 AND sakit pada persendian

**THEN** terdiagnosa penyakit ILI**3. Expert Decision Tree.**

After knowing the expert rules, then a decision tree can be made to assist in the process of making a rule base which will later be used to provide solutions to existing problem conditions. This decision tree is created using a depth-first search, which is an in-depth search of the rule from the root node moving downwards to successive deep levels. The decision tree for the expert application designed in this study is shown in Figure 2.

The search on the expert decision tree starts from the top node to the bottom node. The next process depends on how the answer will be given by the user. If the user gives symptoms, then the system will proceed to the next question, namely the second symptom, and so on until it finds the disease that occurs, and if the user does not give symptoms, the search will continue to another question node to determine the existing disease. Node G (Gejala) is associated with node P (Penyakit). For example P01, the rhinosinusitis is in sections G01-G20 and so on until P09.

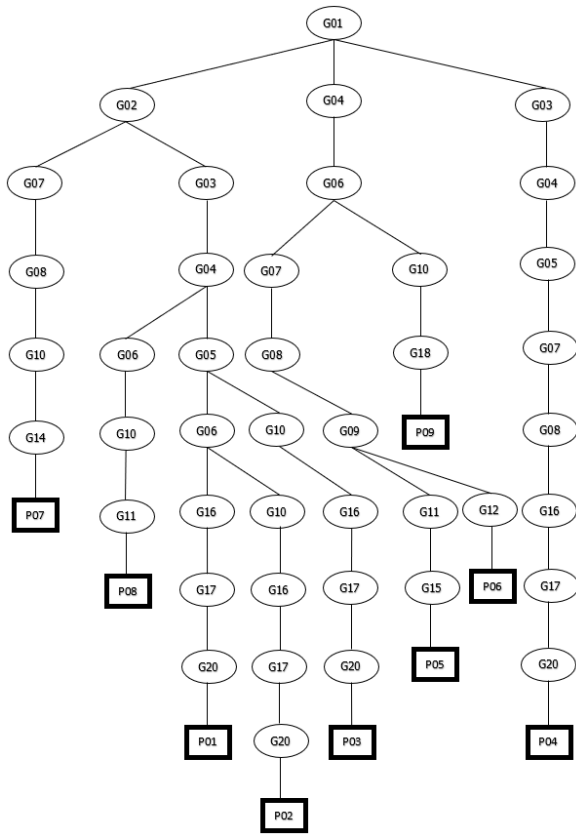


Figure 2. Decision Tree.

4. Use Case Diagram Design.

The following is a design use case diagram of its users.

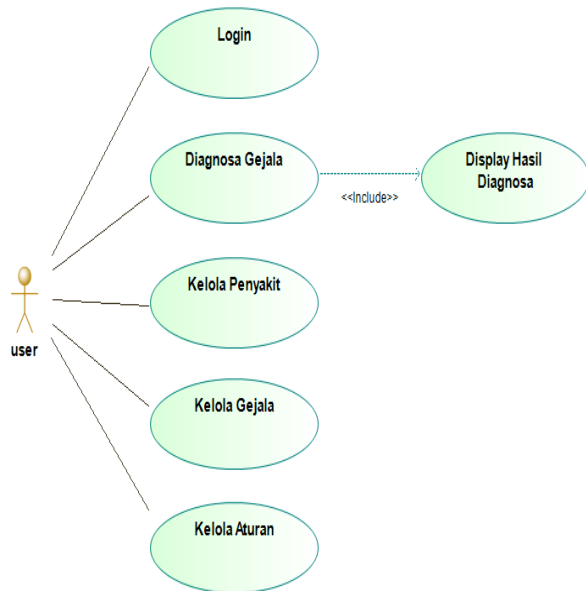


Figure 3. Use Case User.

Figure 3 describes the use case diagram of a user on an expert system for diagnosing acute respiratory infections. In the 'Login' use case, the

actor performs is used to enter the system. For the use case data gejala is used to fill in data according to the complaints experienced by the user and the user uses the internet and a browser to use this website application. As for the kelola aturan use case, it is used to add and manage disease data and solutions that can be done and the user uses the internet and browser to use the website application. Use case Manage Symptoms is used to manage data on symptoms of disease and users use the internet and browsers to use website applications. Then for the use case kelola aturan is used to set the rules on the disease and the symptoms of the disease.

5. Entity Relationship Diagram Design.

In Figure 4 there are one/satu (1) and many/banyak (M) cardinality in the entity relationship diagram. Entities in the tbl\_penyakit entity set are associated with more than one entity in the tbl\_relasi entity set, and entities in the tbl\_relasi entity set can only be associated with at most one entity in the tbl\_penyakit entity set. the entity in the tbl\_relasi set is associated with at most one entity in the tbl\_gejala entity set and the entity in the tbl\_gejala entity set is associated with more than one entity in the tbl\_relasi entity set.

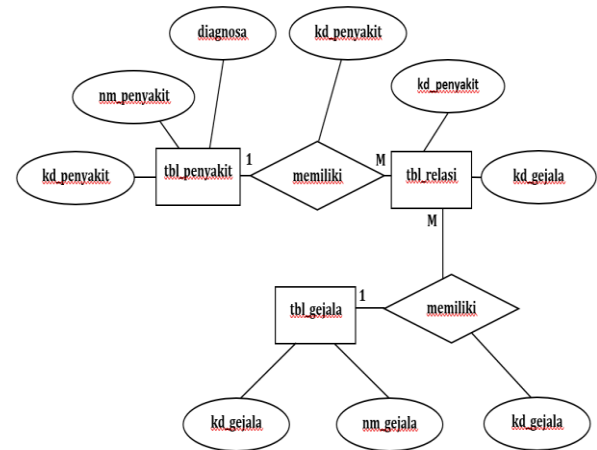


Figure 4. Entity Relationship Diagram

In addition, Figure 4 explains to model the data structure and the relationship between data, where there are three entities, namely tbl\_penyakit, tbl\_relasi, and tbl\_gejala with the attributes in tbl\_penyakit are kd\_penyakit, nm\_penyakit, and diagnosa. For attributes in tbl\_relasi there are kd\_penyakit, kd\_gejala. As for the tbl\_gejala attribute, it has kd\_gejala and nm\_gejala, which serve to make it easier to create relationships in databases and tables.

6. User Interface Design.



The user interface is used to provide an overview of the appearance of the application that will be used by the user.

a. Main Page Design User Login Menu.

In this menu there is a username and password column that must be filled in accordance with the time of registration on the system.

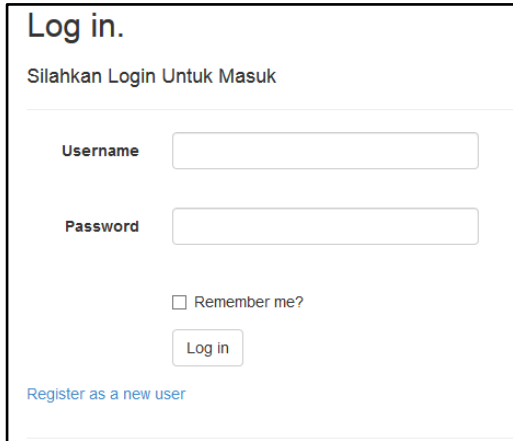


Figure 5. Form Login

Figure 5 describes the login form that serves to access the main page.

b. Main Menu Page Design.

After the user successfully logs in on the previous page, the home page will appear on the system and click the "Mulai Diagnosa" button to continue the system process.



Figure 6. Halaman Utama

Figure 6 describes halaman utama portal used for the homepage and for continuing access to the data penyakit of page, data gejala of page, and the rules page.

c. Diagnostic Menu Page Design.

Figure 7 explains that the user will fill in the data, according to the complaints experienced by the user, in the form of a 'iya' or 'tidak' condition and there is a description that the symptoms experienced in 'G01', 'G02', 'G03'.

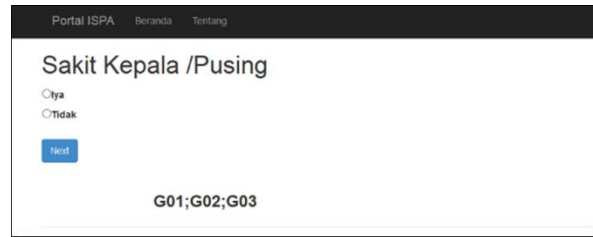


Figure 7. Diagnostic Menu

d. Results Menu Page Design.

After the diagnosis is made, a page will appear containing the results of the diagnosis and possible solutions.

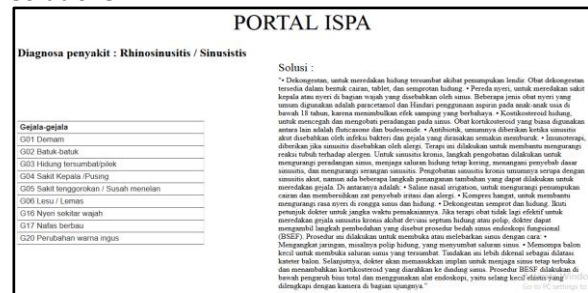


Figure 8. Results Menu

Figure 8 explains to find out the diagnosis of the disease based on the symptoms that have been summarized according to the options and solutions that can be given to the user.

e. Disease Data Manage Page Design.

This page is used to add and manage disease data and possible solutions.

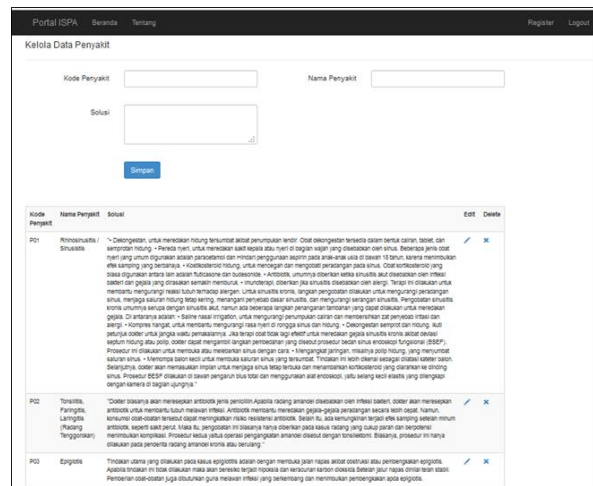


Figure 9. Data Penyakit Manage Page

In addition, Figure 9 explains that you can edit data penyakit and delete data penyakit.

f. Manage Data Gejala of Page Design.

On this page it is used to manage data gejala in disease.



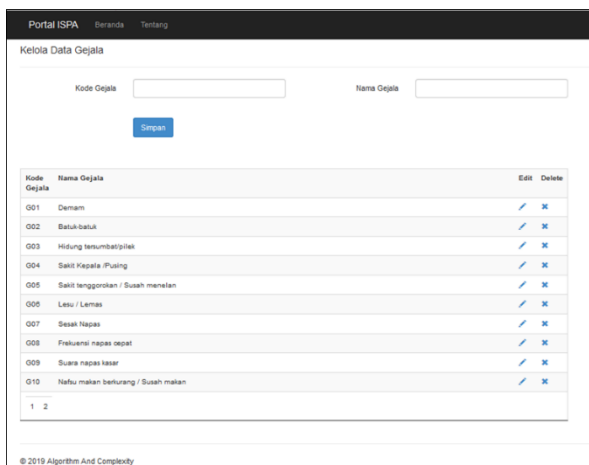


Figure 10. Manage Data Gejala Page.

Figure 10 functions to add, delete, or edit data gejala caused by the disease.

g. User Register Page Design.

This page is used to add users, so that they can access the system.

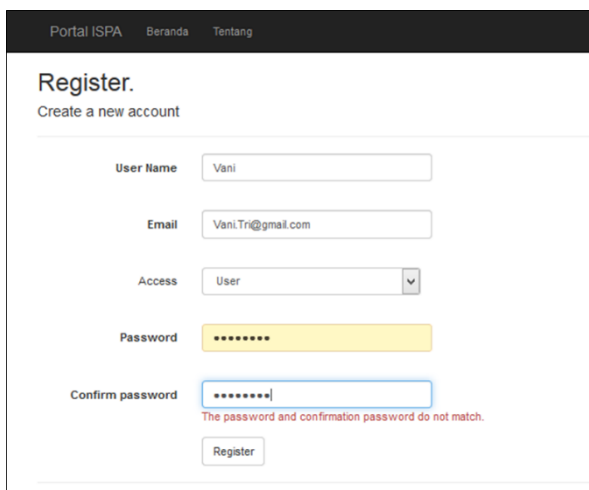


Figure 11. User Registration Page

While in Figure 11 it is explained to add a new user to access the system.

**CONCLUSION**

The expert system application created is based on a web base, so users can easily consult anytime anywhere just by accessing a browser. With this expert system, the general public can find out various kinds of symptoms and types of diseases and diagnoses given. For further development, it is hoped that more symptoms, types of diseases, and diagnoses will be added.

**REFERENCES**

Abdillah, A., Nurajijah, N., & Nawawi, I. (2018). Perancangan Sistem Pakar Diagnosa Penyakit Kehamilan Berbasis Web. *Jurnal Techno Nusa Mandiri*, 15(2), 115. <https://doi.org/10.33480/techno.v15i2.910>

Afandi, H., & Sulisty, D. A. (2019). Sistem Pakar Untuk Diagnosa Hama dan Penyakit Pada Bunga Krisan Menggunakan Forward Chaining. *Jurnal Ilmiah Teknologi Informasi Asia*, 13(2), 101–114.

Fanny, R. R., Hasibuan, N. A., & Buulolo, E. (2017). Perancangan Sistem Pakar Diagnosa Penyakit Asidosis Tubulus Renalis Menggunakan Metode Certainty Factor Dengan Penelusuran Forward Chaining. *Media Informatika Budidarma*, 1(1), 13–16.

Hidayat, H. A., & Gumilang, G. (2017). Sistem Pakar Diagnosis Penyakit Yang Disebabkan Oleh Rokok Dengan Metode Forward Chaining. *JUTEKIN*, 5(2).

Jarti, N., & Trisno, R. (2017). Sistem Pakar Diagnosa Penyakit Alergi Pada Anak Berbasis Web Dengan Metode Forward Chaining Di Kota Batam. *Jurnal Edik Informatika, Penelitian Bidang Komputer Sains Dan Pendidikan Informatika*, 2, 197–205.

Kusuma, D. T., Karmila, S., & Nova, T. A. (2018). Forward Chaining Dalam Diagnosis Penyakit Tumbuhan Allium Cepa Var Aggregatum. *Jurnal PETIR*, 11(2), 164–178.

Maliki, O., & Dangkoa, F. (2018). Sistem Pakar Tipe Perumahan Menggunakan Metode Forward Chaining. *Jurnal Informatika UPGRIS*, 4(2), 150–157.

Mardiah, W., S. Mediawati, A., & Setyorini, D. (2017). Pencegahan Penularan Infeksi pernapasan Akut dan Perawatannya Pada balita Di Rumah Di Kabupaten Panggandaran. *Dharmakarya: Jurnal Aplikasi Ipteks Untuk Masyarakat ISSN 1410 - 5675*, 6(3), 258–261. <http://jurnal.unpad.ac.id/dharmakarya/article/view/14853>

Masya, F., Prastiawan, H., & Mubaroq, S. (2016). Application Design to Diagnosis of Bone Fracture ( Traditional ) using Forward Chaining Methods. *International Research Journal of Computer Science*, 3(09), 23–30.

Minarni, D., Griha, I., & Isa, T. (2017). Aplikasi Bagi Waris Islam dengan Metode Forward Chaining berbasis Web. *Jurnal Online Informatika*, 2(2), 127–133. <https://doi.org/10.15575/join.v2i2.107>

Nuraeni, F., Agustin, Y. H., & Yusup, E. N. (2016). Aplikasi Pakar Untuk Diagnosa Penyakit Kulit Menggunakan Metode Forward Chaining Di Al Arif Skin Care Kabupaten Ciamis. *Seminar*



*Nasional Teknologi Informasi Dan Multimedia 2016*, 6-7.

- Permata Sari, M., & Realize. (2019). Sistem Pakar Mendiagnosa Penyakit Osteoporosis Pada Lansia Menggunakan Metode Forward Chaining Berbasis Web. *Jurnal Ilmiah Informatika Universitas Putera Batam*, 01.
- Puspitawati, D. A. (2018). Sistem Pakar Diagnosis Penyakit Kanker Payudara Dan Cara Penanganannya. *Jurnal Techno Nusa Mandiri*, 15(2), 129.  
<https://doi.org/10.33480/techno.v15i2.921>
- Ramadhana, F., Fauziah, F., & Winarsih, W. (2020). Aplikasi Sistem Pakar untuk Mendiagnosa Penyakit ISPA menggunakan Metode Naive Bayes Berbasis Website. *STRING (Satuan Tulisan Riset Dan Inovasi Teknologi)*, 4(3), 320.  
<https://doi.org/10.30998/string.v4i3.5441>
- Wahyudi, R., Utami, E., & Arief, M. R. (2016). Sistem Pakar E-Tourism Pada Dinas Pariwisata D.I.Y Menggunakan Metode Forward Chaining. *Jurnal Ilmiah DASI*, 17(2).
- Wulandari, A. D., & Basuki, P. P. (2019). Hubungan Tingkat Pendidikan Formal Dan Pengetahuan Ibu Dengan Kejadian Infeksi Saluran Pernapasan Akut (ISPA) Pada Anak Usia 0-59 Bulan Di Kelurahan Bumijo Kecamatan Jetis Kota Yogyakarta. *Journal of Chemical Information and Modeling*, 8(2), 99-105.